

## Analyzer

### New powerful prism analysis software

A robust platform, a simple user interface, and practical software options make Analyzer a must-have geotechnical tool.

#### SQL DATA

##### Analyzer uses SQL.

Softrock Solutions introduces the Analyzer software tool, which replaces Quikslope for automated data. All prism measurements are stored on a Microsoft SQL 2005 server for maximum performance and security. Main advantages are:

- + SQL 2005 data integrity
- + Powerful graphing edit tools do not affect original raw data
- + Velocity over 24 hours, 12 hours or user defined hours. All expressed as mm/day
- + Manage prisms by cluster with no restrictions. Select prisms graphically
- + Many graph types, multiple prisms and scatter plots
- + Overlay birds eye view showing current prism location
- + Graph spikes and steps can be marked as invisible
- + Draw gradient line on graph
- + Set any point graphically as benchmark
- + Automatic management of an active prism list
- + 3D CAD capability
- + Prism locations in CAD
- + Presentation data in CAD shows degrees of movement
- + Data filtering at any stage
- + Reports showing latest movements, direction and dip.

#### GRAPHING

##### Graphing edits keep integrity of data.

These screen shots show the power of Analyzer when managing monitoring data. Steps and spikes can be a problem with monitoring data and make it very difficult to see overall data trends. Steps can happen for many reasons, like when there is a change in control pillars and you wish to graph the distance. Or often, a prism has been knocked for some reason, and you do not want to show this sudden movement because it detracts from perceiving the trend in the prism movement. The Analyzer "step removal" and "spike removal" tool will tag these steps and points so that they are not visible, often showing a more pertinent picture. After data is tagged, steps and spikes can be viewed (or not) at will so that data integrity of the raw data is kept intact.



Powerful Graphing Tools

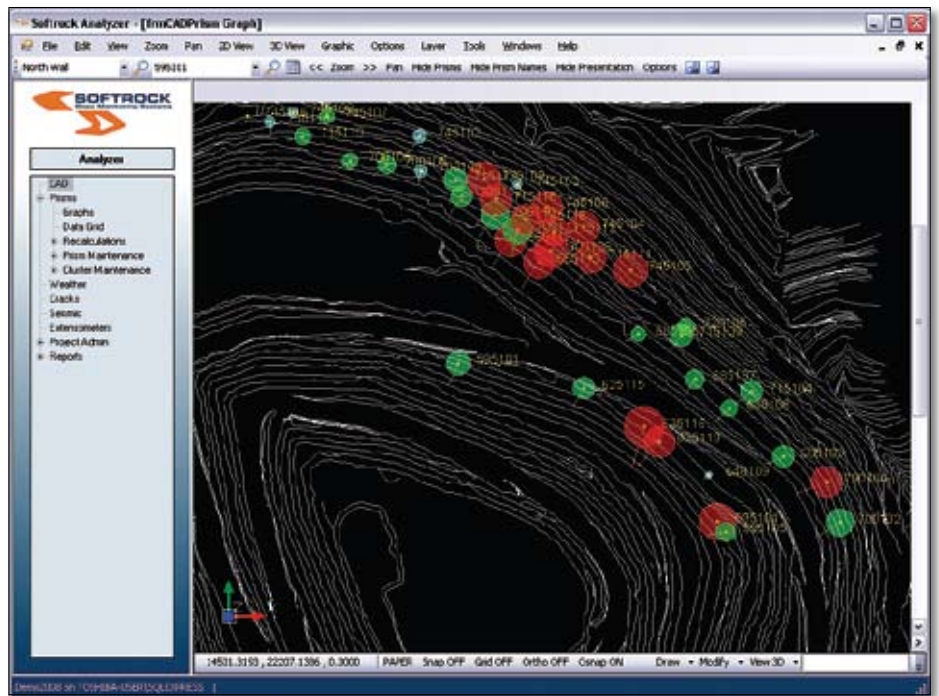


**3D CAD**

**Powerful CAD Tools**

The integrated CAD tool can manage data in full 3D, while the powerful interface allows 3D model manipulation. View prism location and cluster locations. Add line work and text.

- + Show or hide prisms
- + Show or hide prism names
- + Filter data by date
- + Import and export multiple graphic file types
- + Layer control
- + Multiple windows (CAD & graph)
- + Normal CAD navigation tools
- + Presentation options
- + Show or hide presentation.



*Powerful CAD Tools*

**3D CAD**

**CAD Presentation Tool**

At last there is a tool for depicting movements in an easy to use software tool. The presentation option can show movement through symbol size and colour range. Set the movement range, set the colour, and adjust the size where necessary. Movement type can be 3D, 2D, Distance, Velocities. Management will love this!



*CAD Presentation Tools*